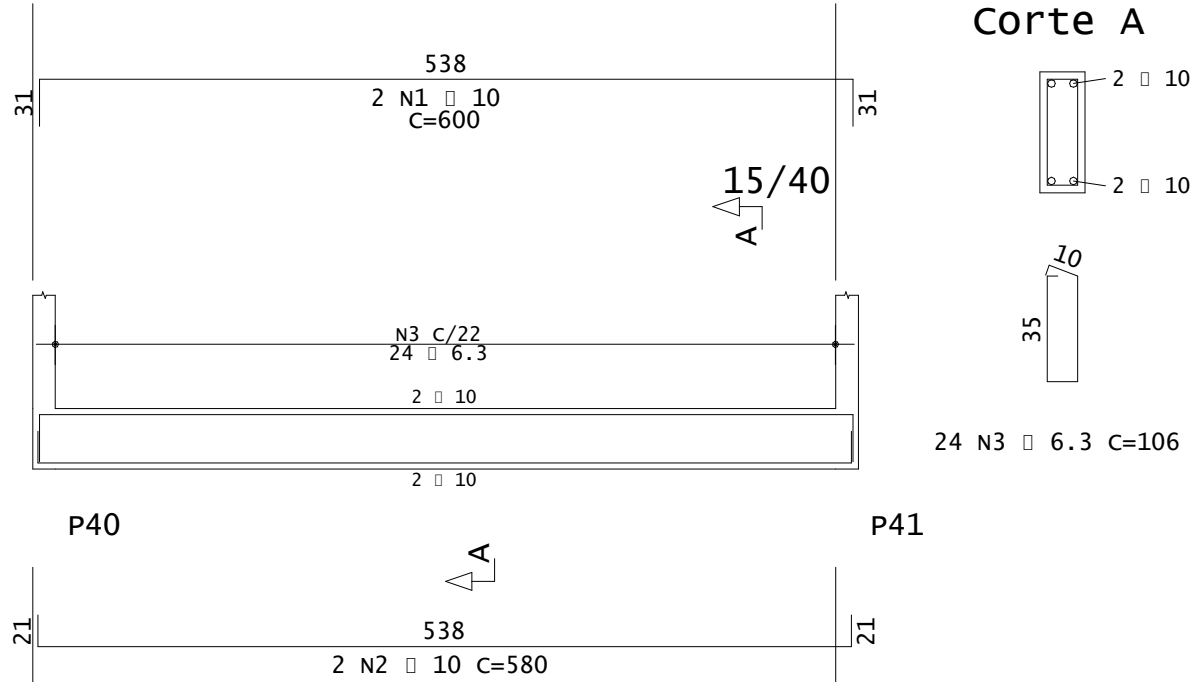
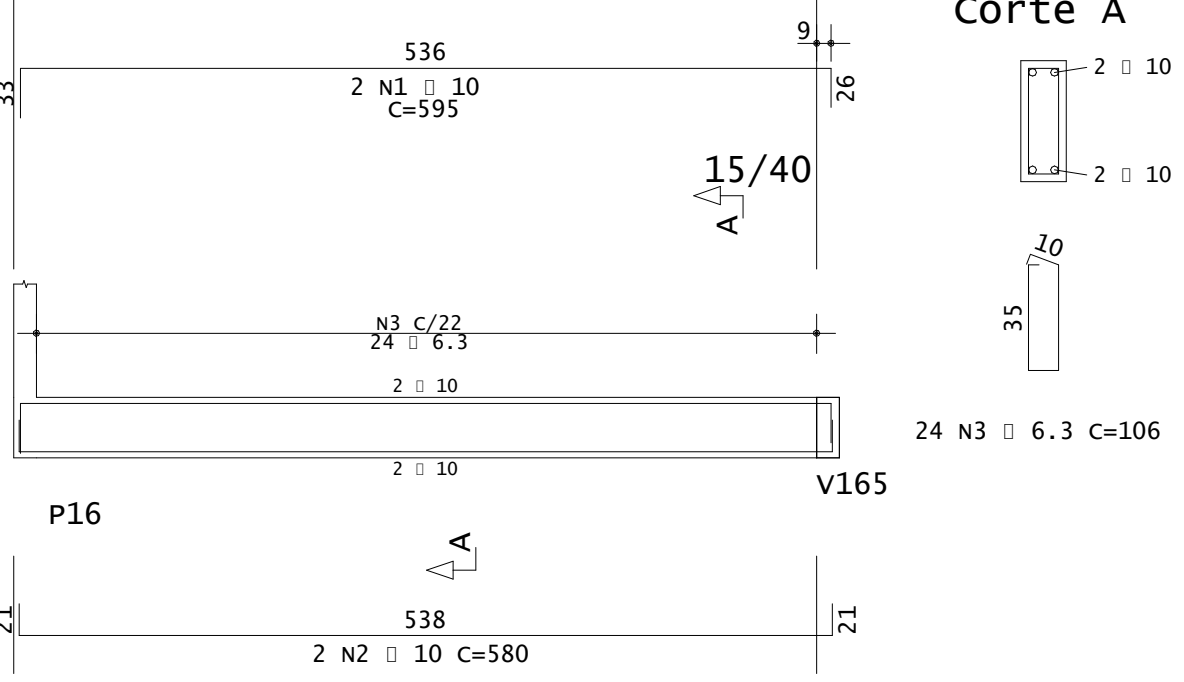


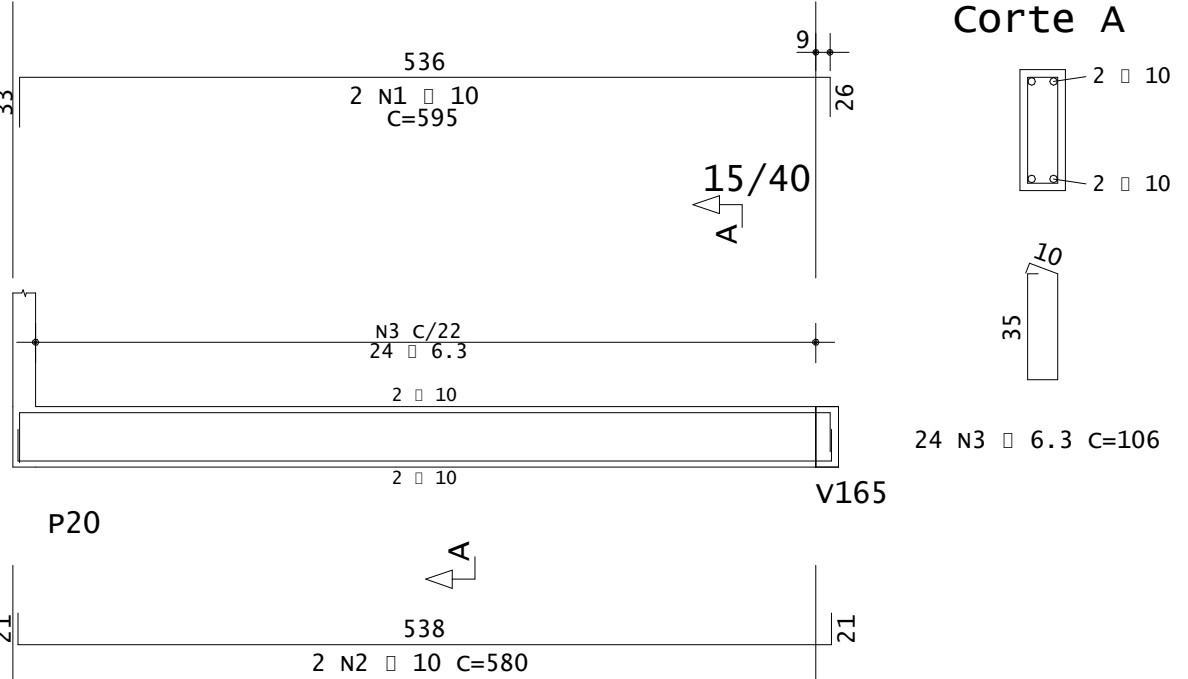
V114



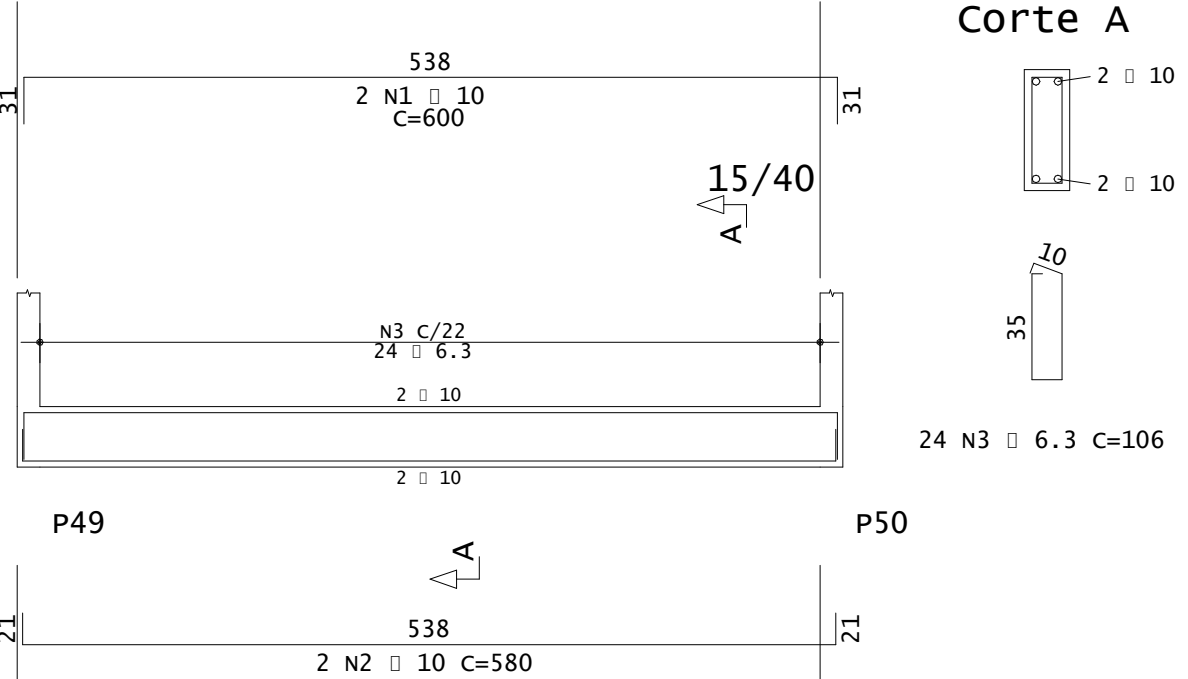
V105



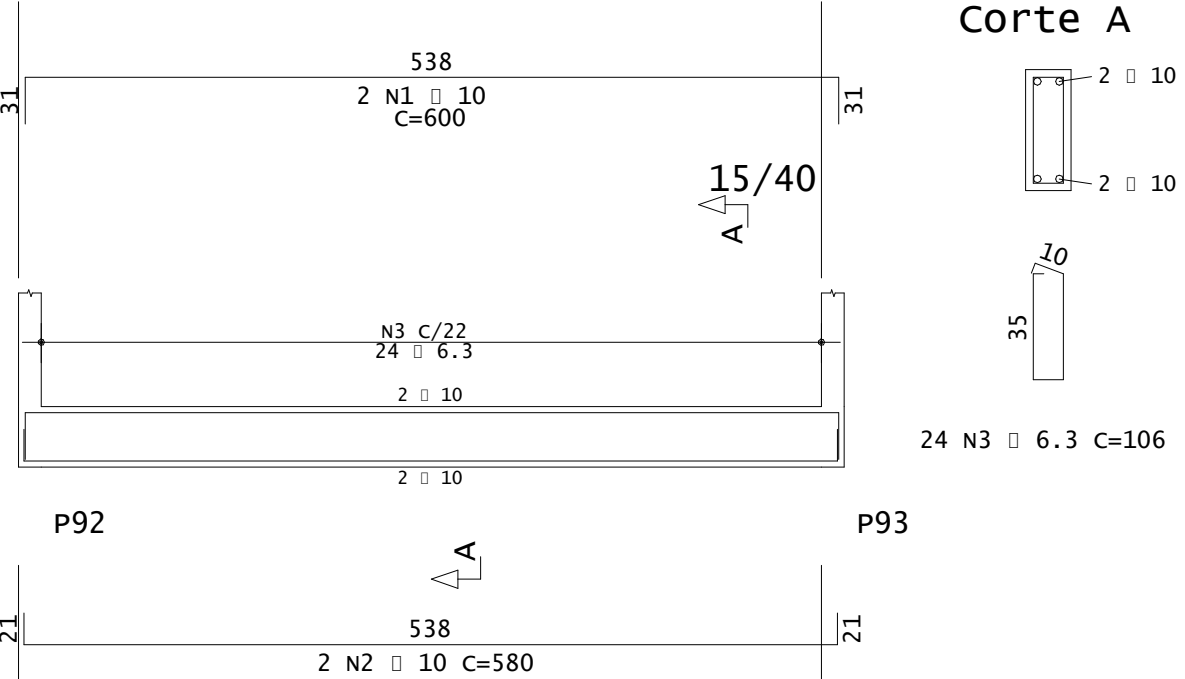
V106



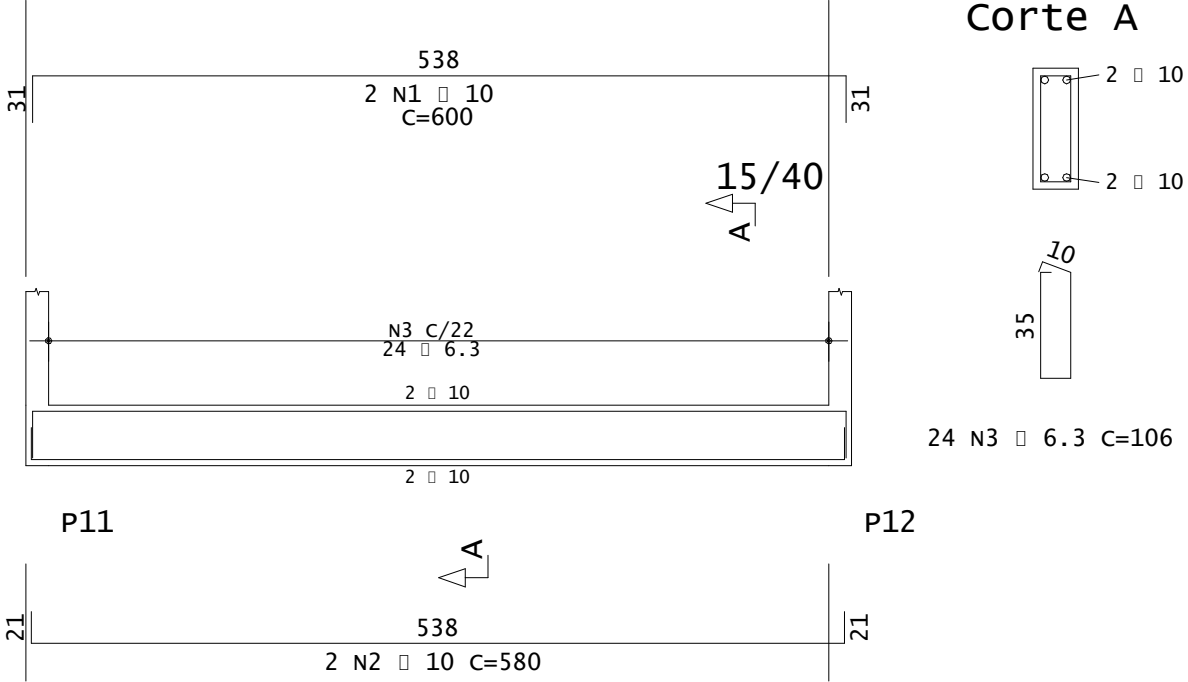
V117



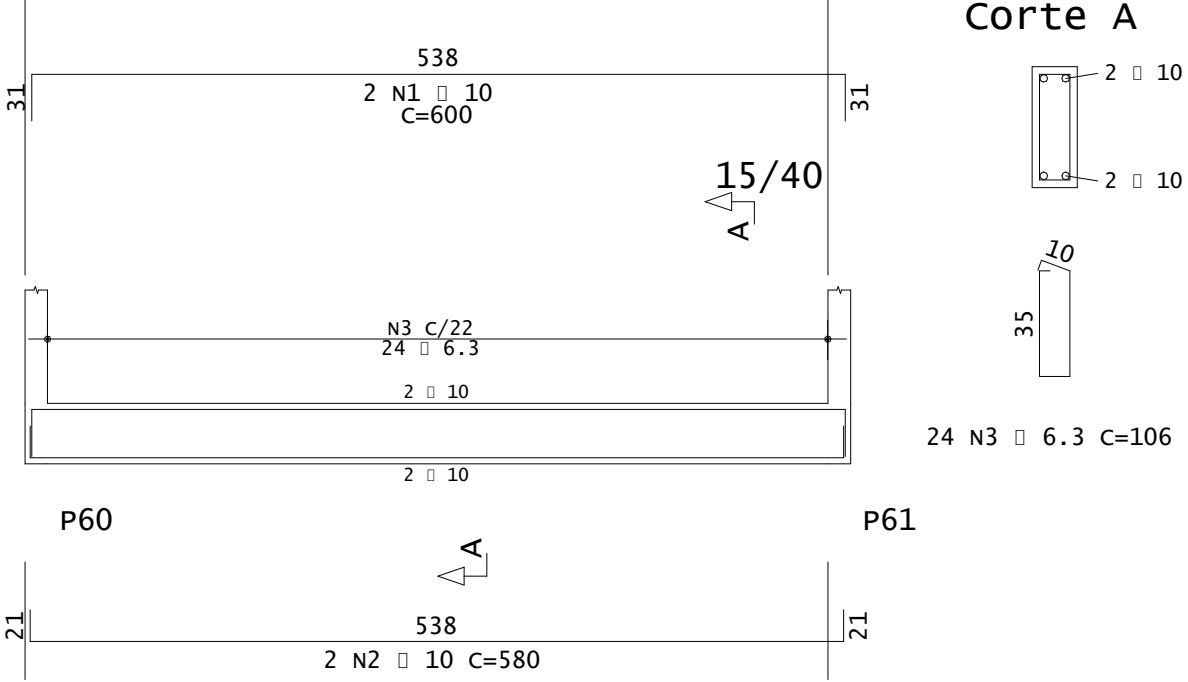
V126



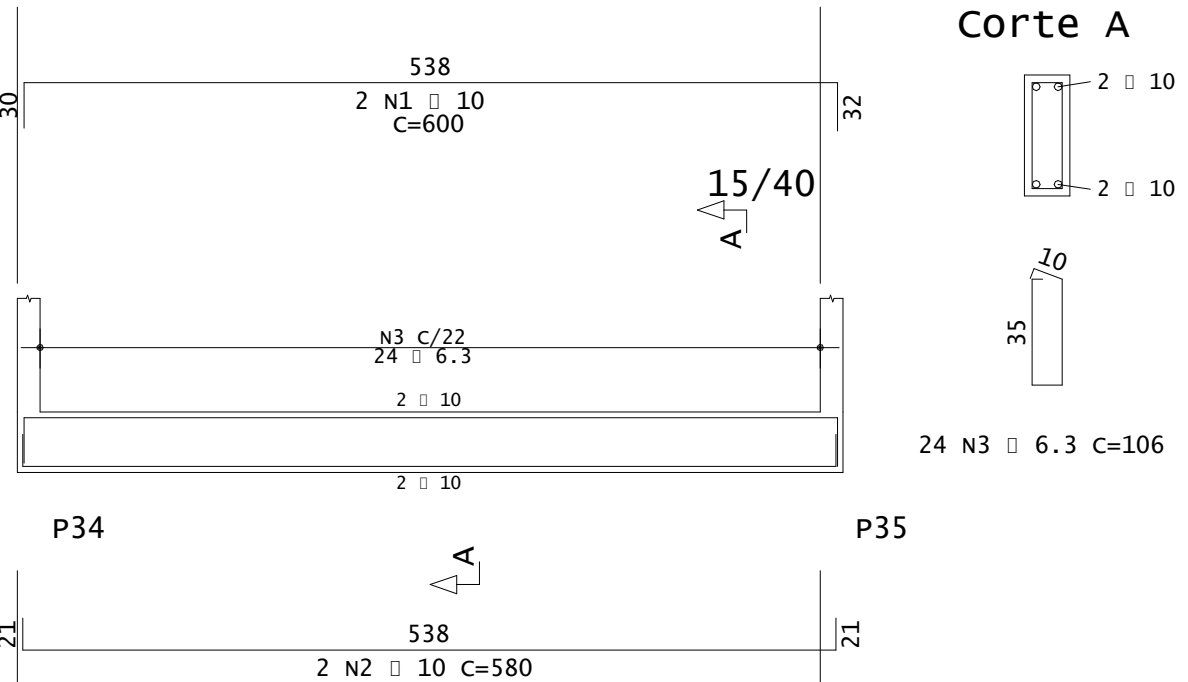
V103



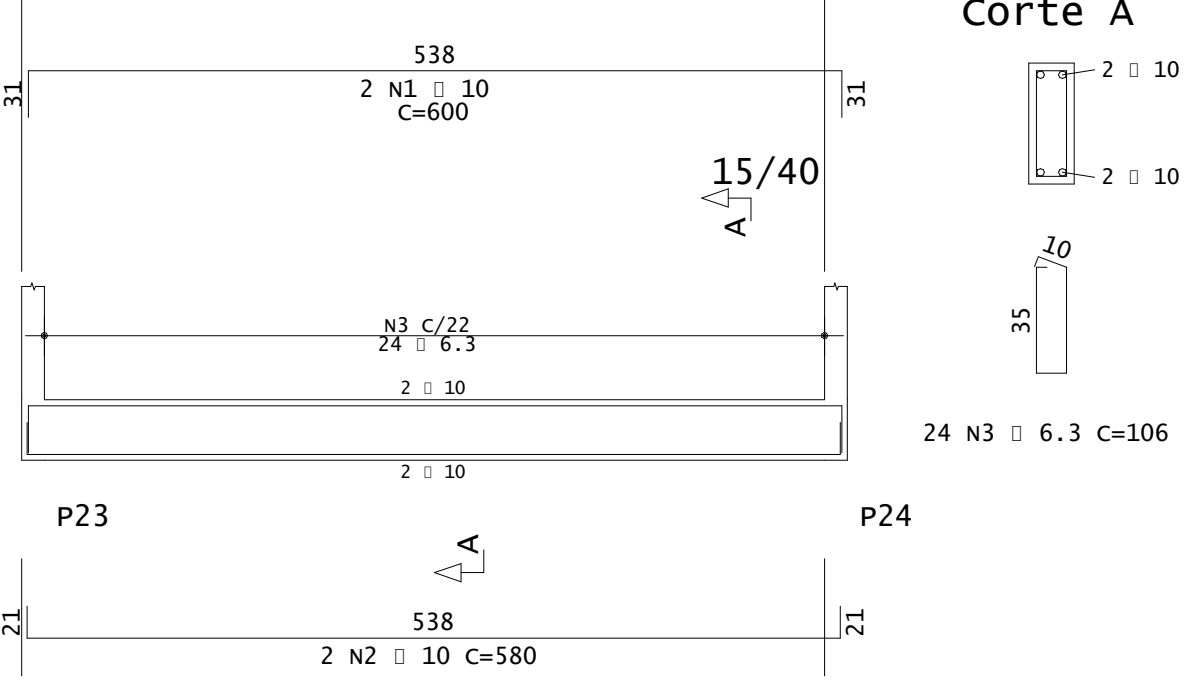
V122



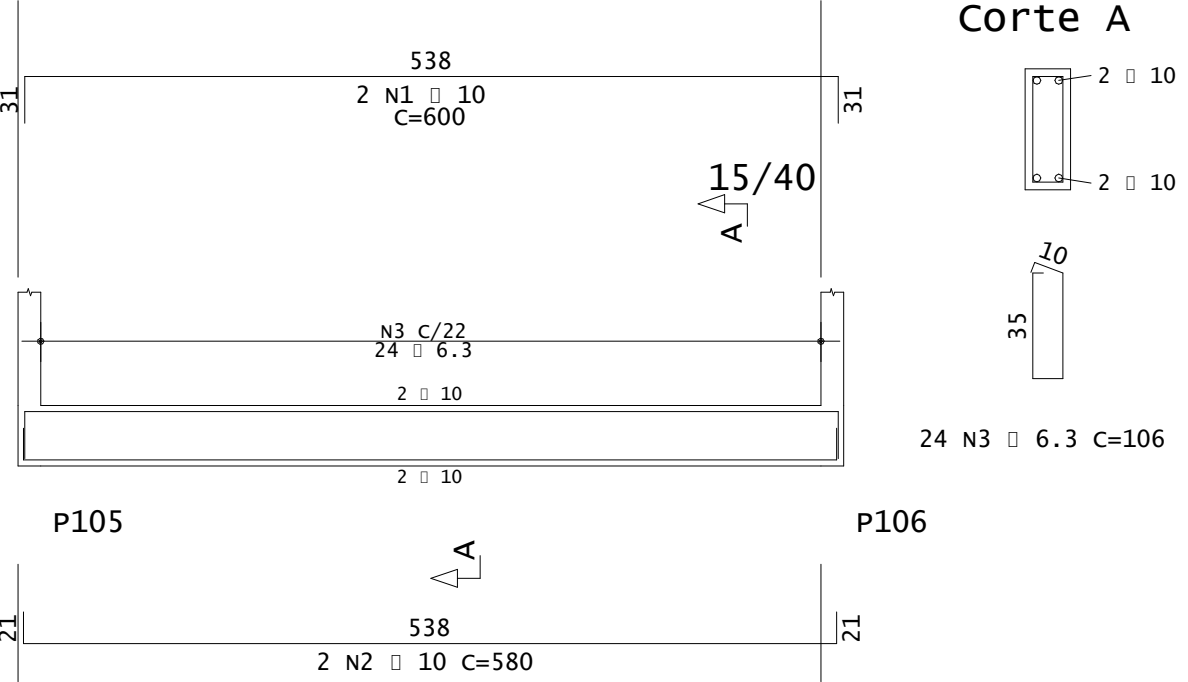
V112



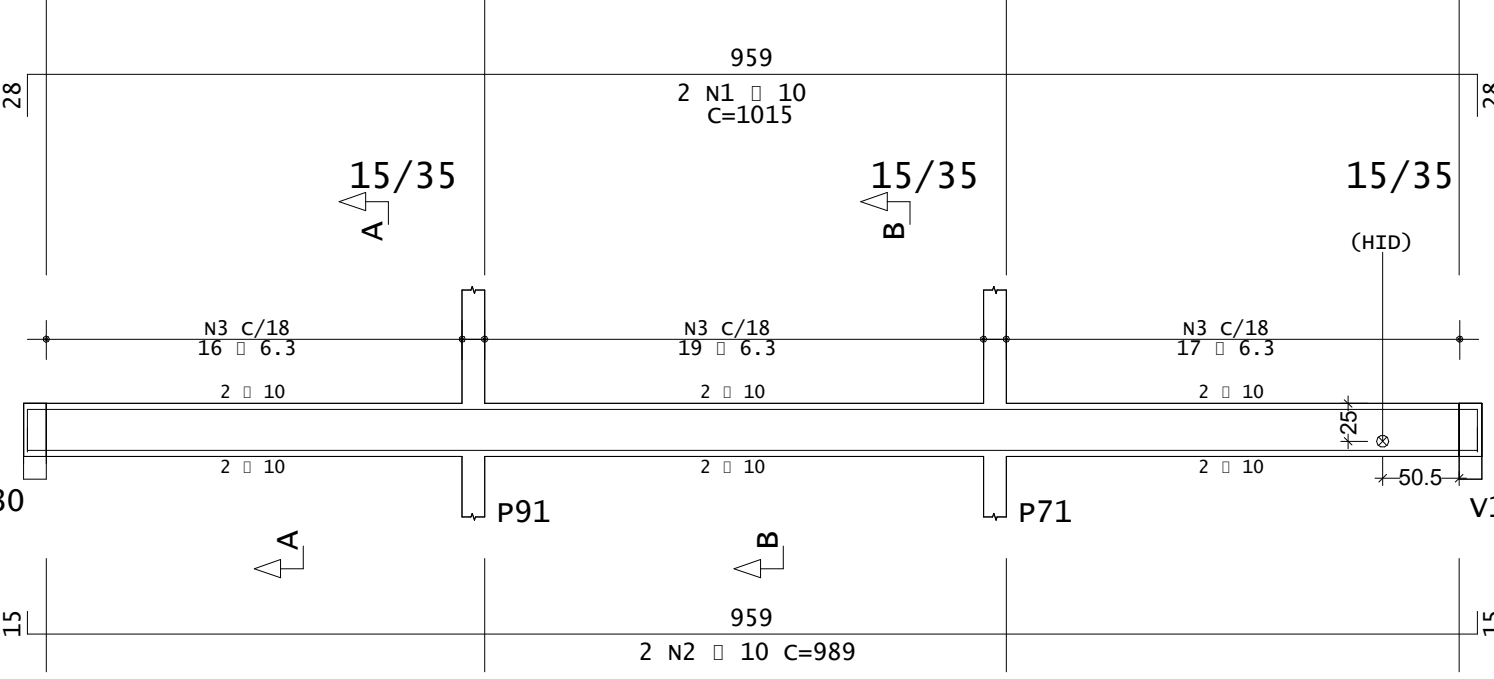
V107



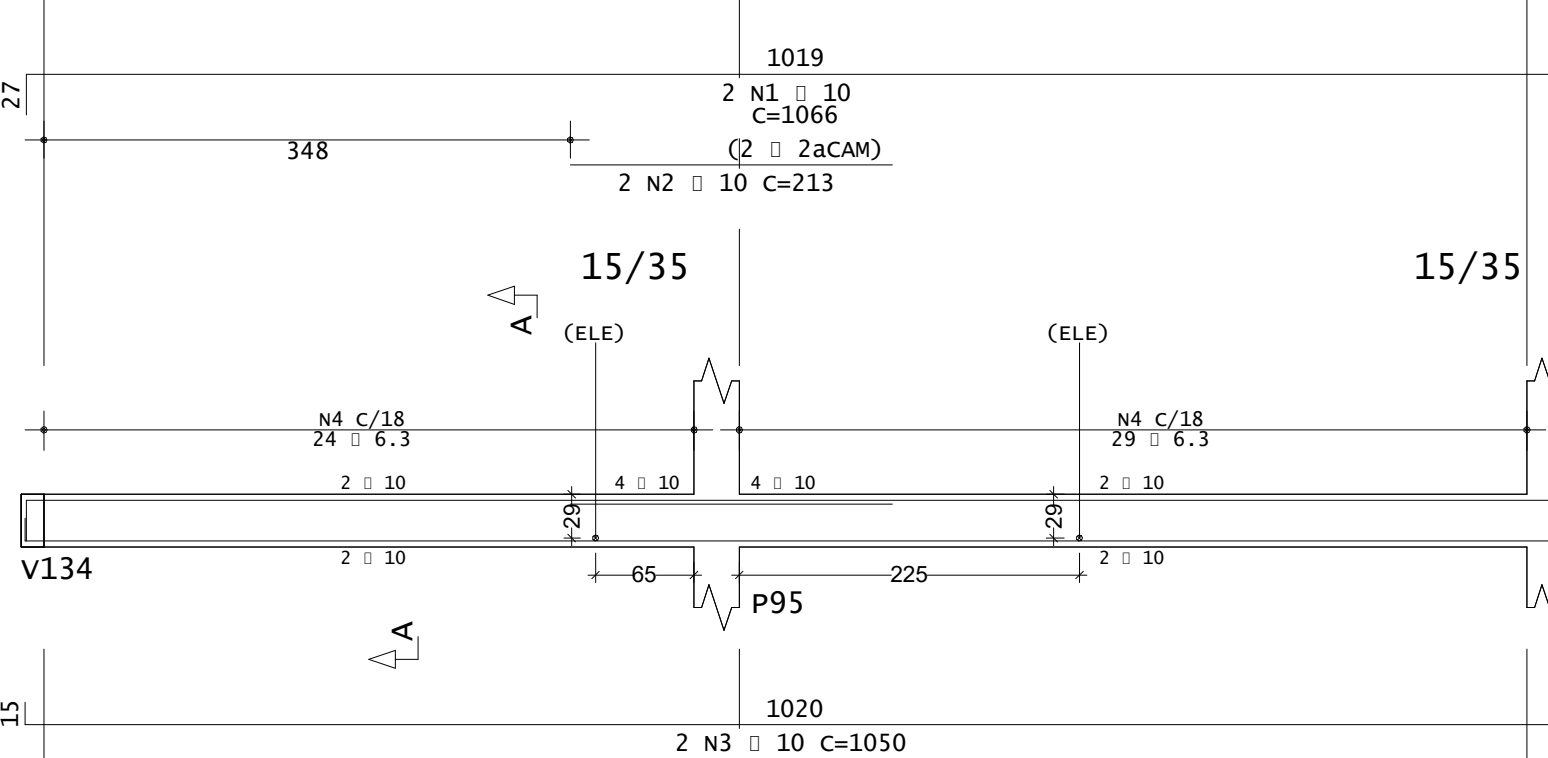
V131



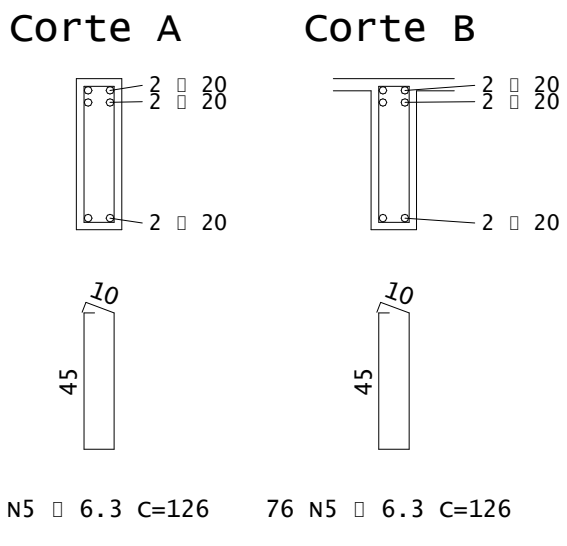
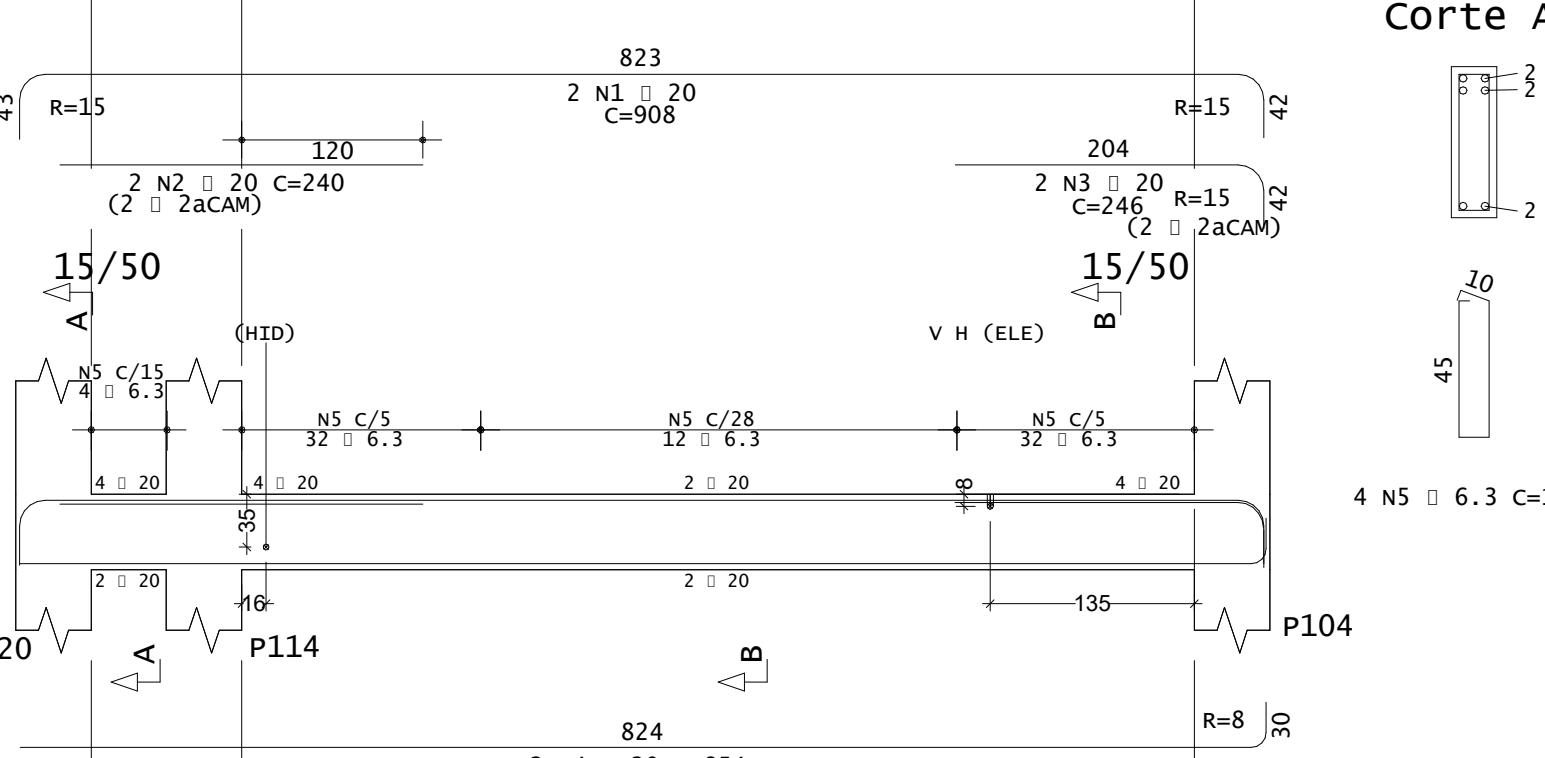
V159



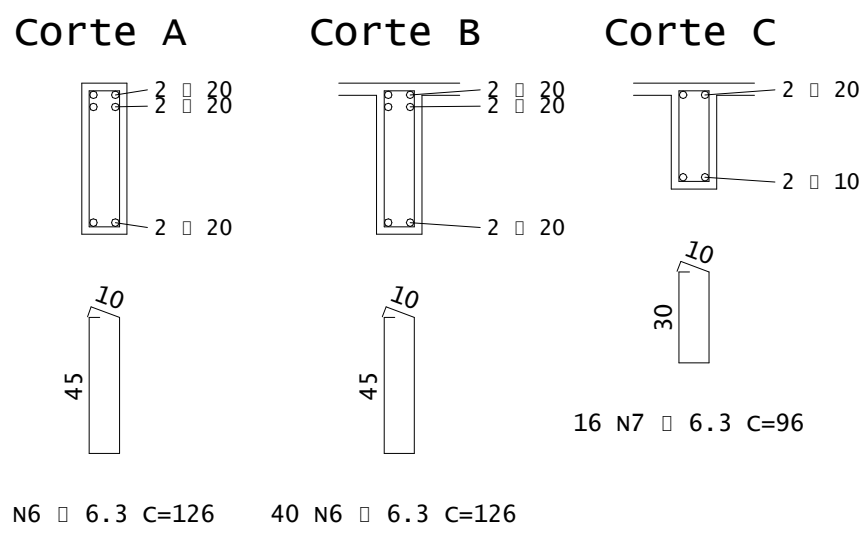
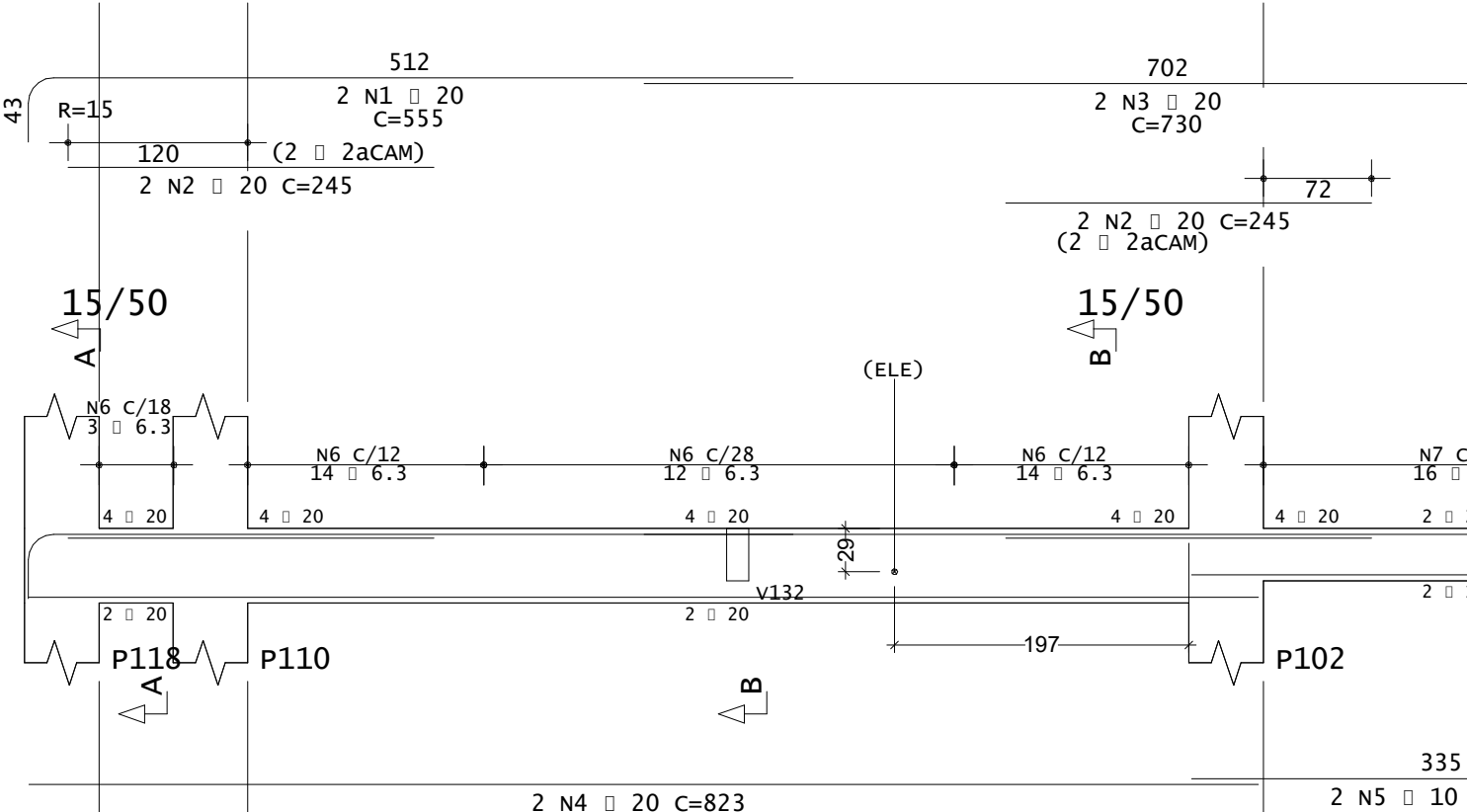
V129



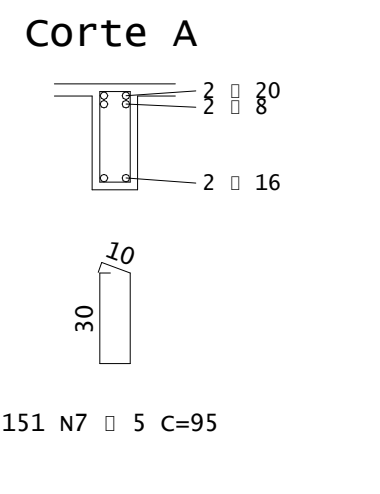
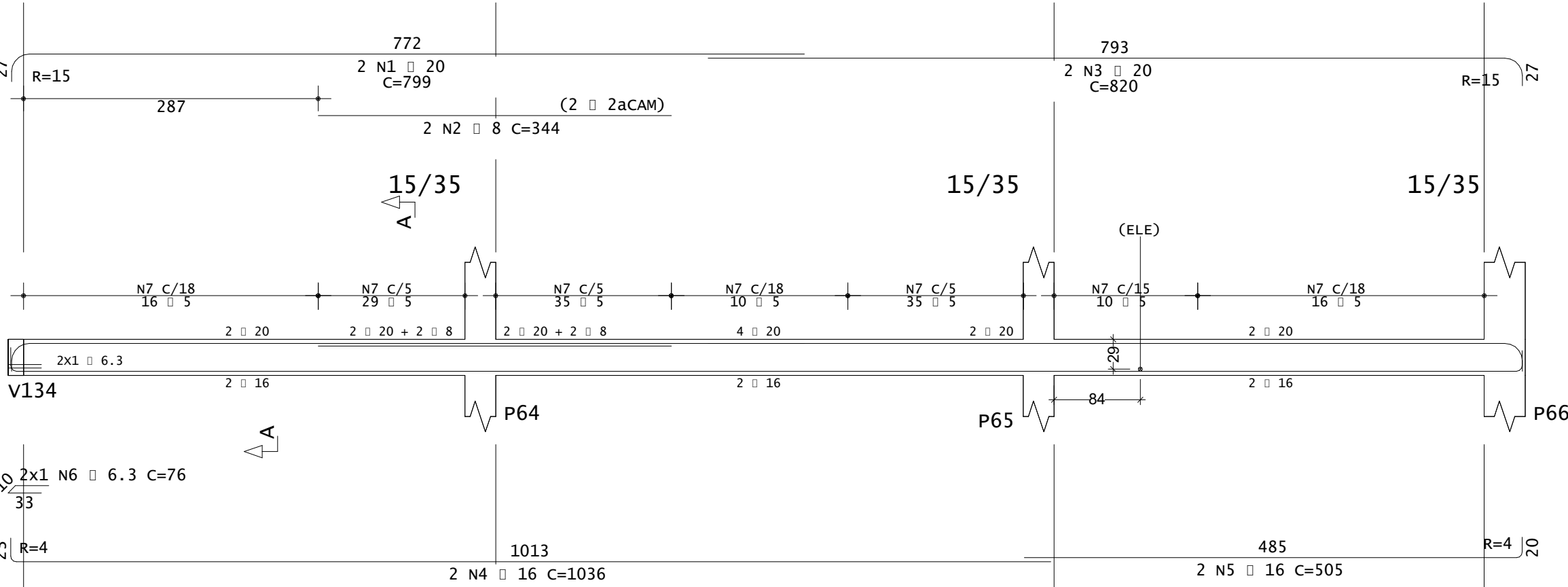
V158



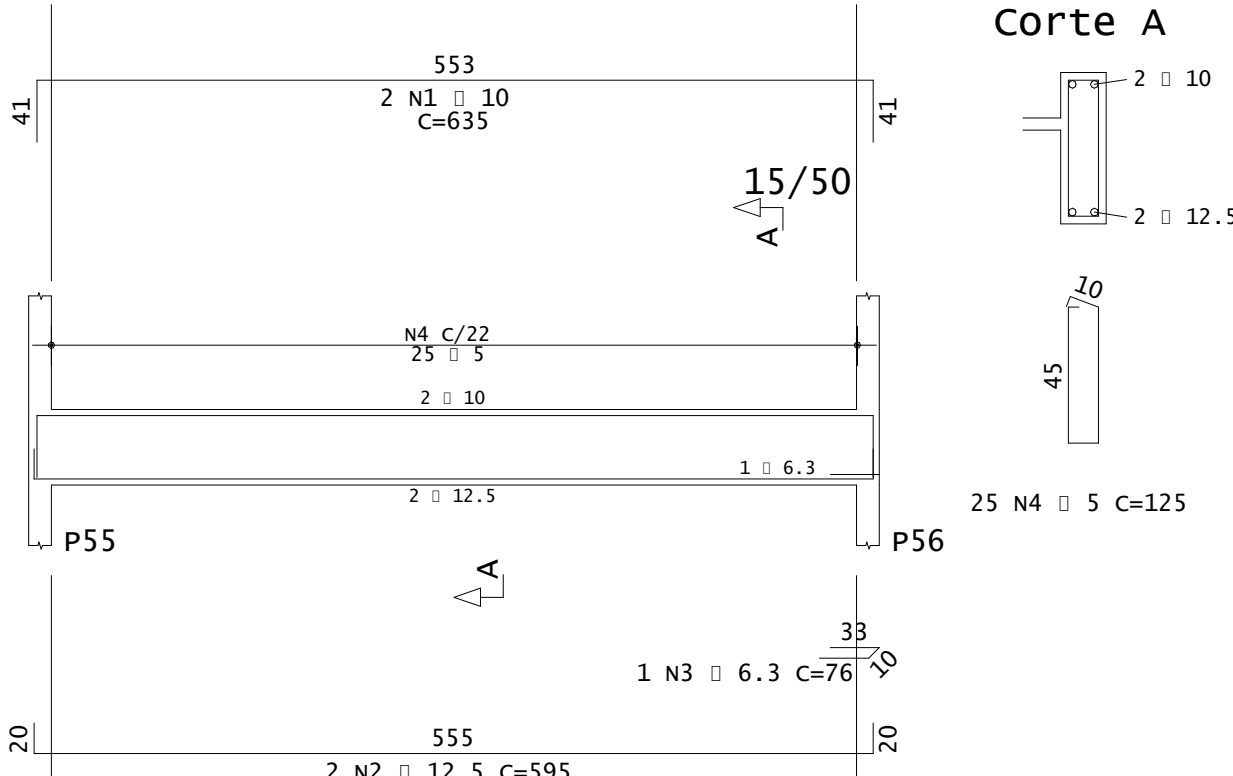
V145



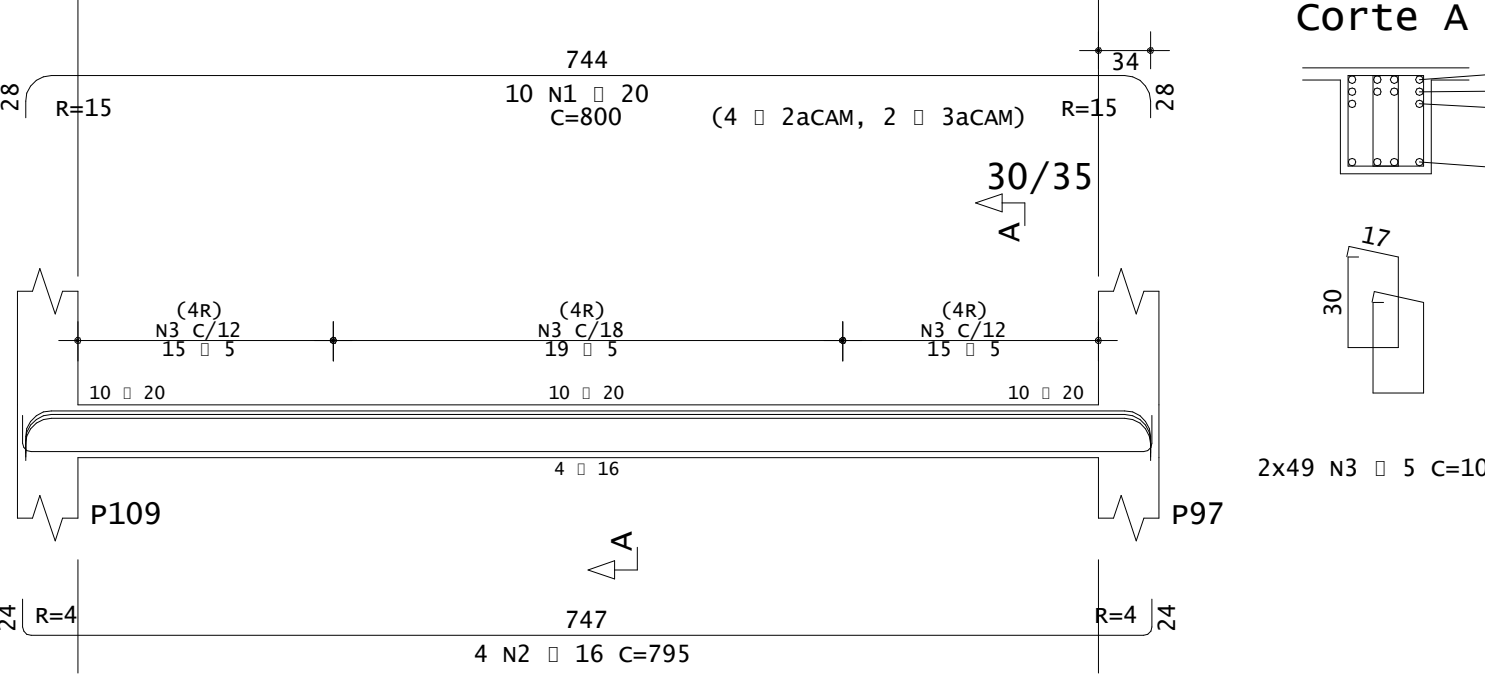
V124



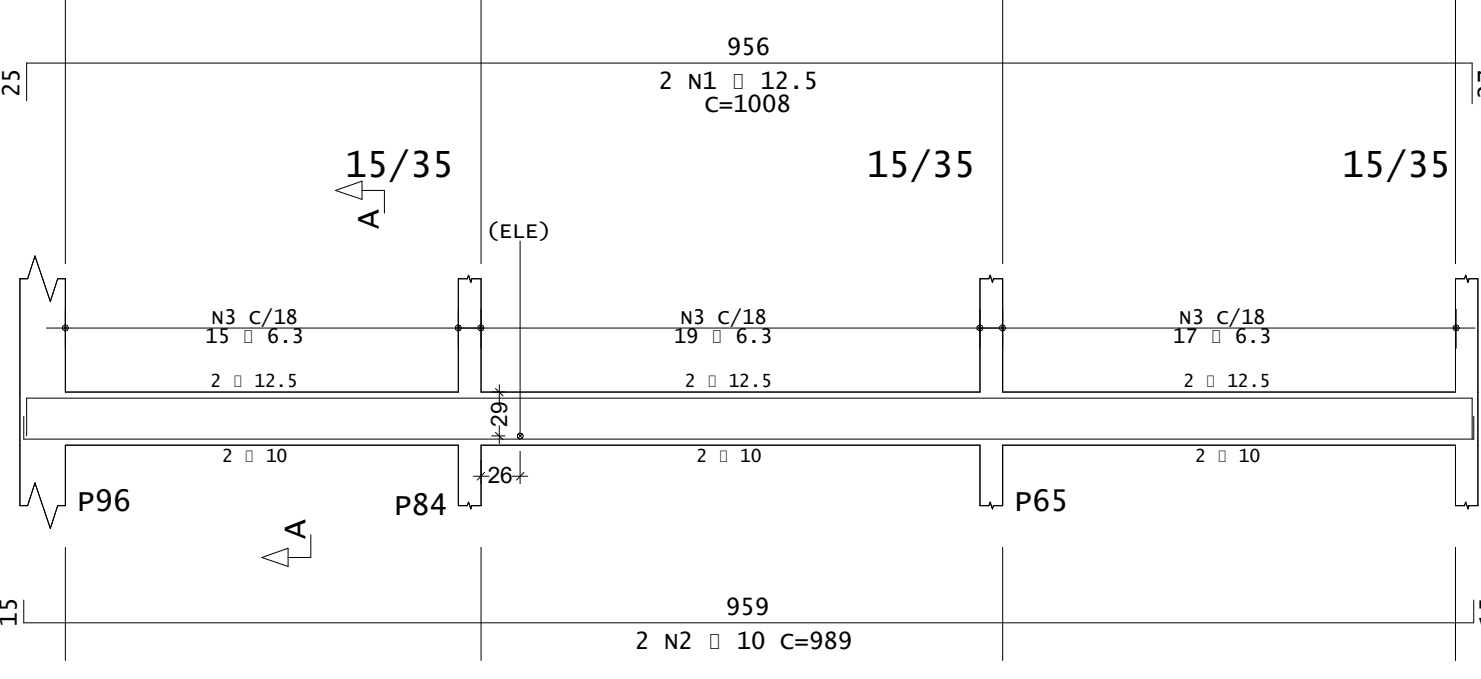
V120



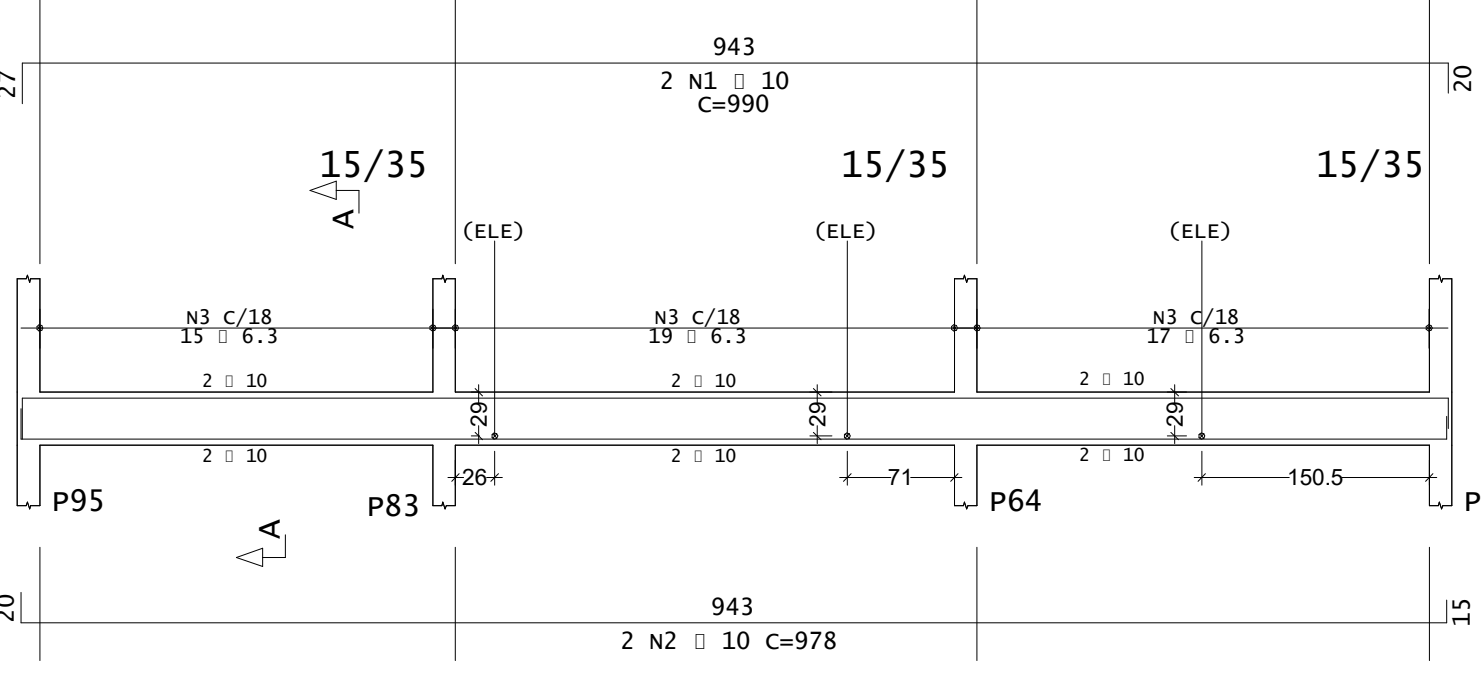
V140



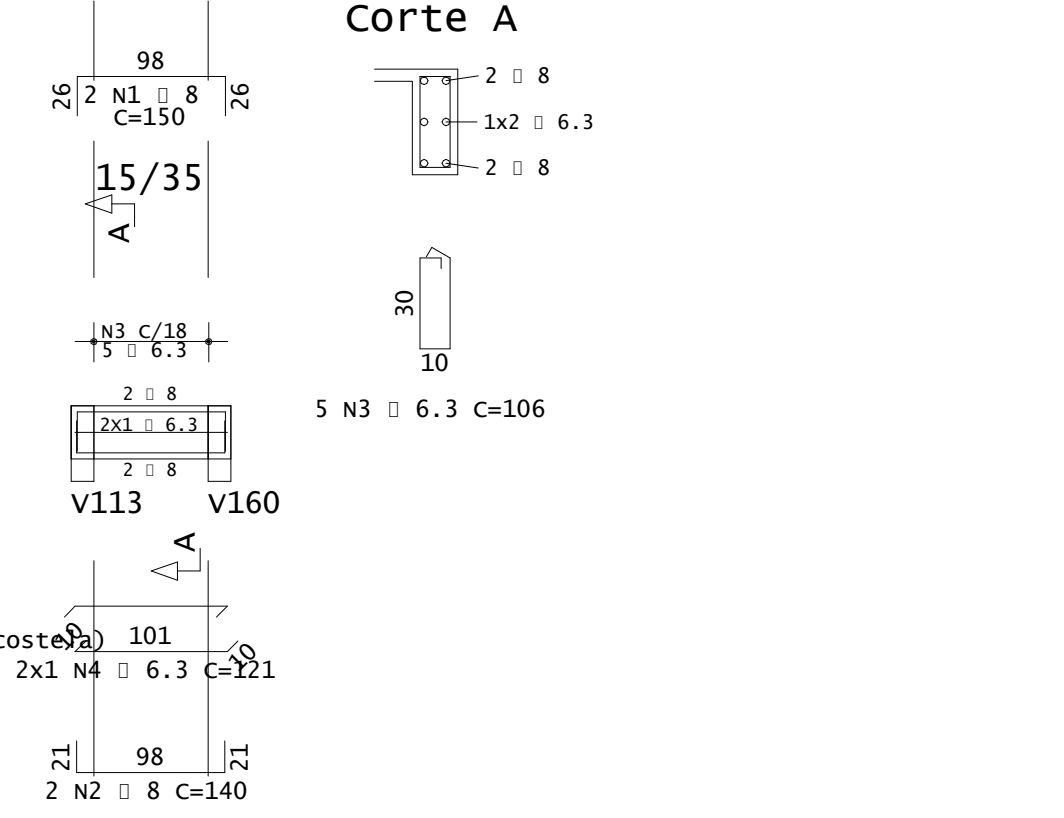
V137



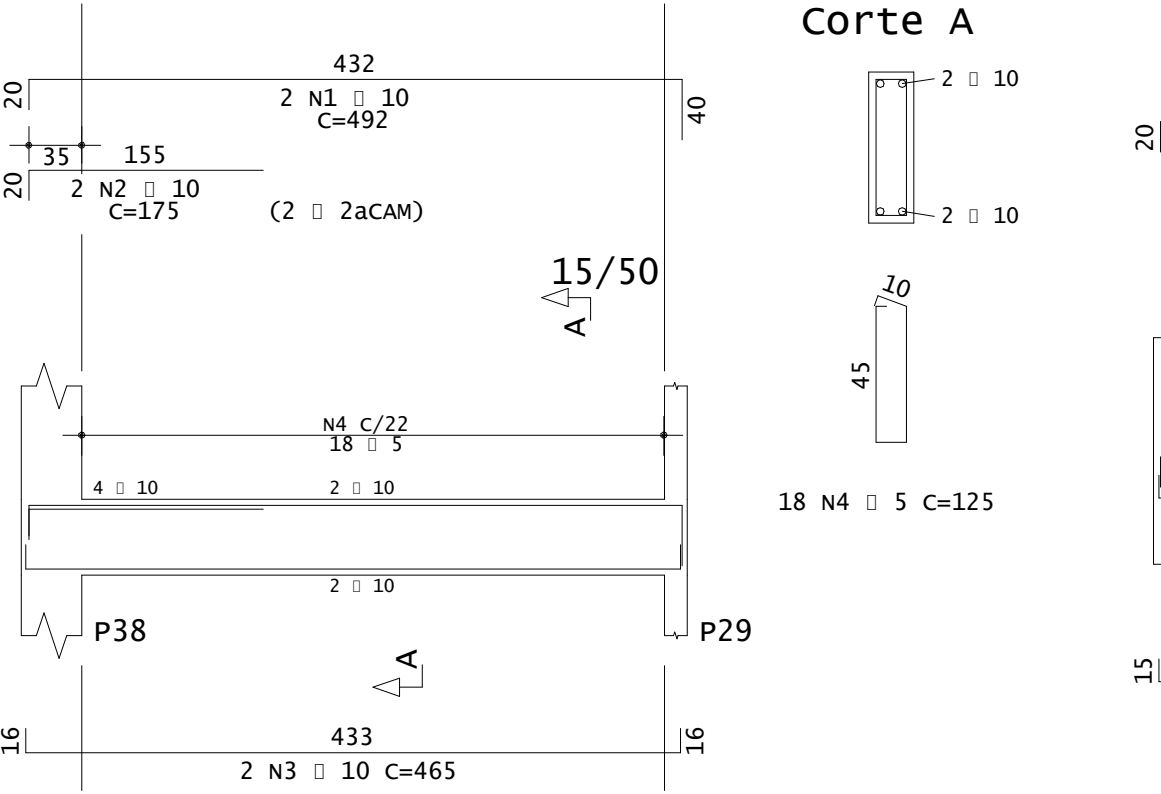
V135



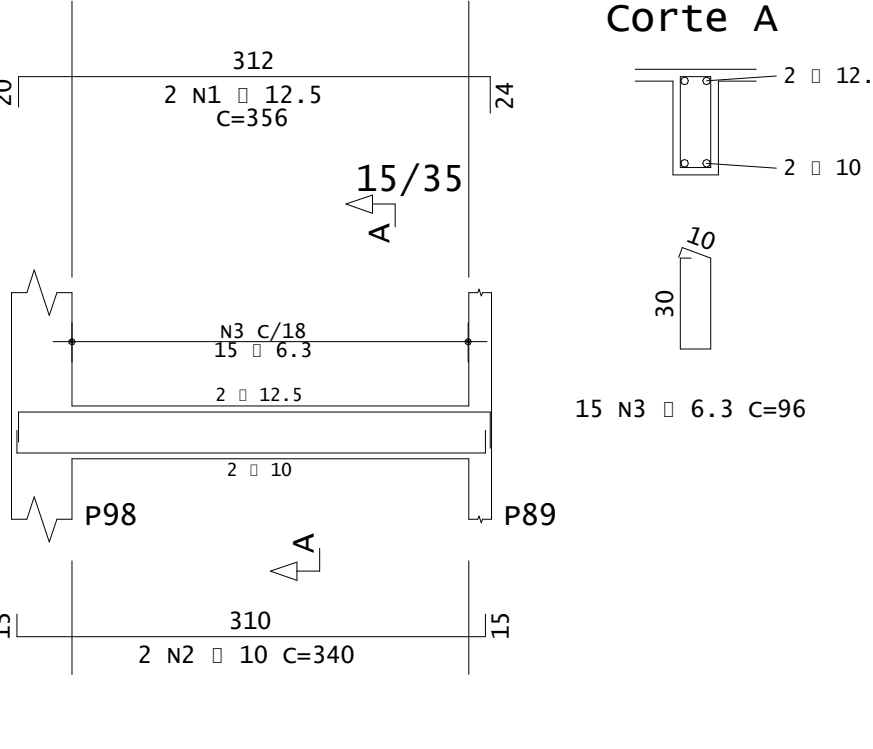
Shaft3



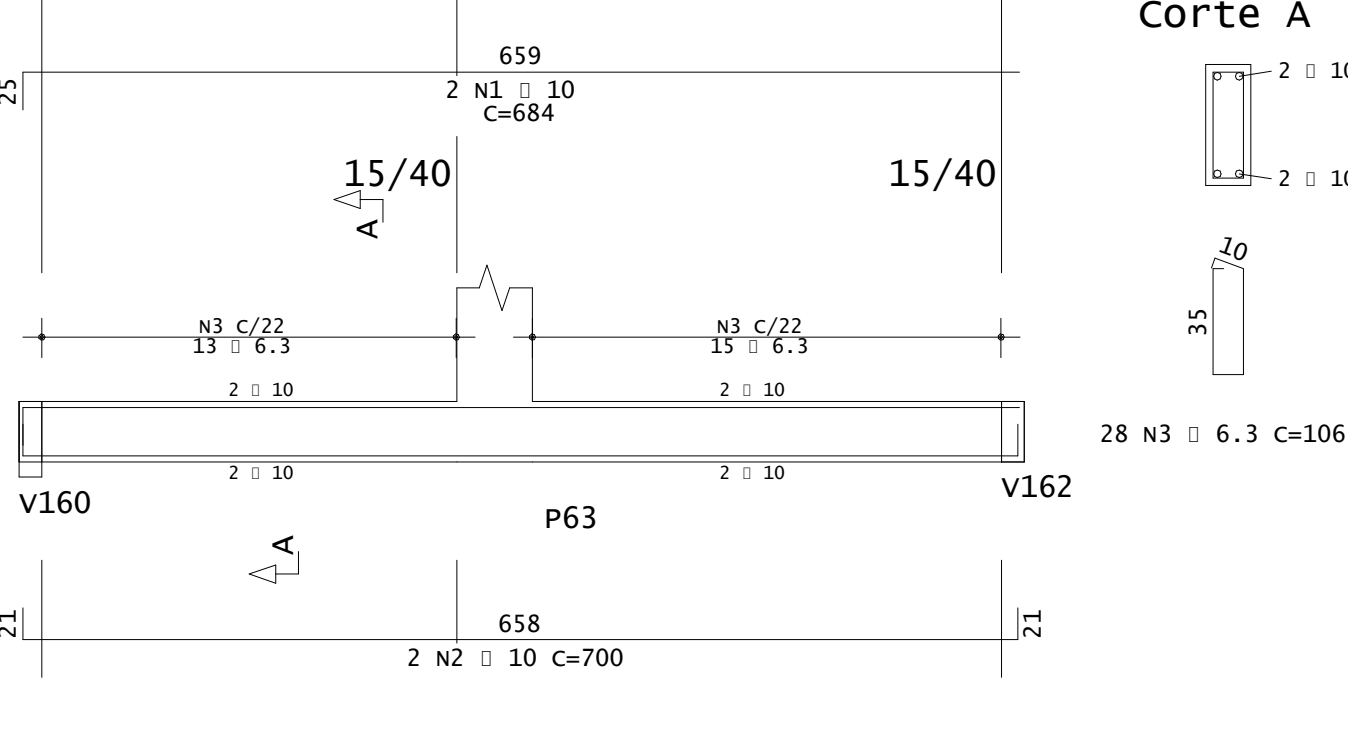
V157



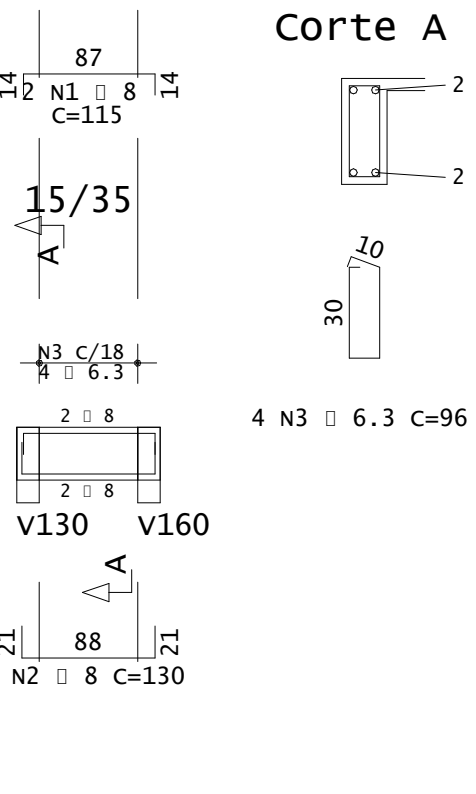
V154



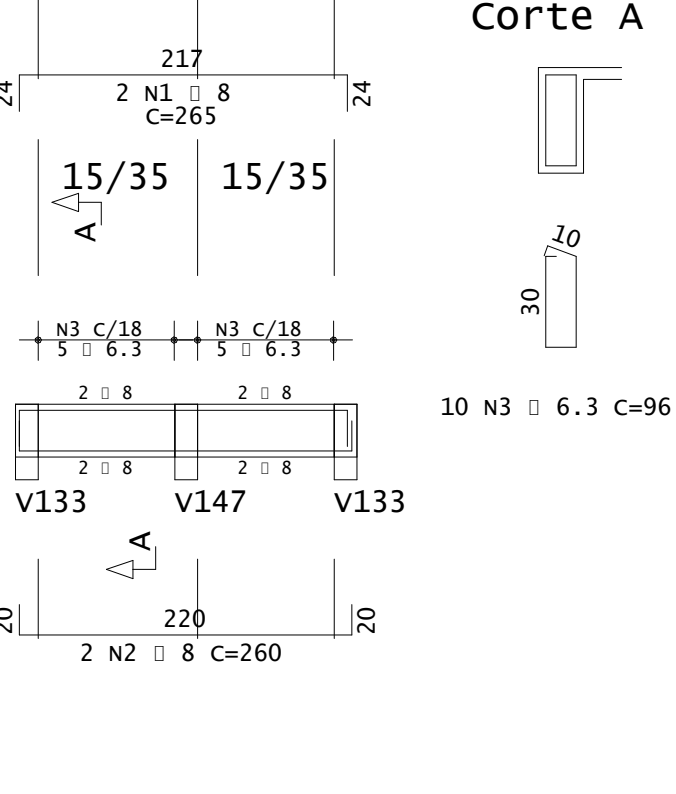
V123



vshaft2



vshaft1



ACO	POS	BIT	QUANT	COMPRIMENTO	TOTAL
mm	cm	cm			
V103					
50A	1	10	2	600	1200
50A	2	10	2	580	1160
50A	3	6.3	24	106	2544
V105					
50A	1	10	2	595	1190
50A	2	10	2	580	1160
50A	3	6.3	24	106	2544
V106					
50A	1	10	2	595	1190
50A	2	10	2	580	1160
50A	3	6.3	24	106	2544
V107					
50A	1	10	2	600	1200
50A	2	10	2	580	1160
50A	3	6.3	24	106	2544
V112					
50A	1	10	2	600	1200
50A	2	10	2	580	1160
50A	3	6.3	24	106	2544
V114					
50A	1	10	2	600	1200
50A	2	10	2	580	1160
50A	3	6.3	24	106	2544
V117					
50A	1	10	2	600	1200
50A	2	10	2	580	1160
50A	3	6.3	24	106	2544
V120					
50A	1	10	2	635	1270
50A	2	12.5	2	595	1190
50A	3	6.3	1	76	76
60A	4	5	25	125	3125
V122					
50A	1	10	2	600	1200
50A	2	10	2	580	1160
50A	3	6.3	24	106	2544
V123					
50A	1	10	2	684	1368
50A	2	10	2	700	1400
50A	3	6.3	28	106	2968
V124					
50A	1	20	2	799	1598
50A	2	10	8	340	680
50A	3	20	2	820	1640
50A	4	20	2	1056	2072
50A	5	16	2	505	1010
50A	6	6.3	3	76	132
60A	7	5	151	95	14455
V126					
50A	1	10	2	600	1200
50A	3	6.3	24	106	2544
V129					
50A	1	10	2	1066	2132
50A	2	10	2	233	466
50A	3	10	2	1050	2100
50A	4	6.3	53	96	5088
V131					
50A	1	10	2	600	1200
50A	2	10	2	580	1160
50A	3	6.3	24	106	2544
V135					
50A	1	10	2	990	1980
50A	2	10	2	978	1956
50A	3	6.3	51	96	4896
V137					
50A	1	12.5	2	1008	2016
50A	2	10	2	989	1978
50A	3	6.3	51	96	4896
V140					
50A	1	20	10	800	8000
50A	2	10	4	795	3180
60A	3	5	98	109	10682
V143					
50A	1	10	2	685	1370
50A	2	10	2	670	1340
50A	3	6.3	34	96	3264
V145					
50A	1	20	2	555	1110
50A	2	20	4	245	980
50A	3	20	2	730	1460
50A	4	20	2	823	1646
50A	5	10	2	330	700
50A	6	6.3	43	126	5418
50A	7	6.3	16	96	1536
V154					
50A	1	12.5	2	356	712
50A	2	10	2	340	680
50A	3	6.3	15	96	1440
V157					
50A	1	10	2	492	984
50A	2	10	2	175	350
50A	3	10	2	465	930
60A	4	5	18	125	2250
V158					
50A	1	20	2	908	1816
50A	2	20	2	240	480
50A	3	20	2	246	492
50A	4	20	2	854	1708
50A	5	6.3	80	126	10080
V159					
50A	1	10	2	1015	2030
50A	2	10	2	989	1978
50A	3	6.3	52	96	4992
vshaft1					
50A	1	8	2	265	530
50A	2	8	2	260	520
50A	3	6.3	10	96	960
vshaft2					
50A	1	8	2	115	230
50A	2	8	2	130	260
50A	3	6.3	4	96	384
shaft3					
50A	1	8	2	150	300
50A	2	8	2	140	280
50A	3	6.3	5	106	530
50A	4	6.3	2	123	246

RESUMO DE AÇO		
ACO	BIT	COMPR
mm	m	kgf
60A	204	47